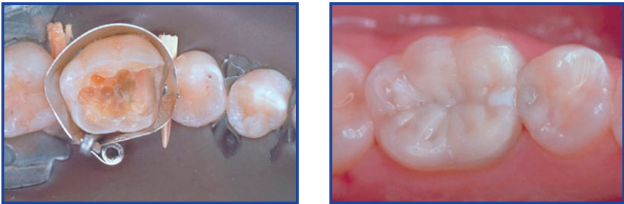


AutoMatrix®

Retainerless Matrix System

Ideal for larger preparations and those that have buccal or lingual extensions.



Retainerless System

- Clear field of vision, access for quadrant work, better patient comfort

Conical formation

- Better anatomical adaptation helping to avoid restorative overhang

Torque control of AutoMate® III tightening device

- Limits over-tensioning, less adjustment needed

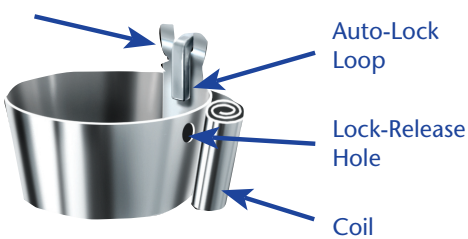
Pre-loaded bands

- Save time, less steps

Four different matrix bands are available for all situations:

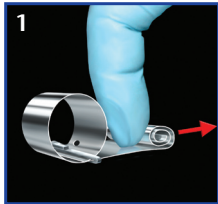
Type	Narrow/ Regular (NR)	Medium/ Thin (MT)	Medium/ Regular (MR)	Wide/ Regular (WR)
Height (mm)	4.76	6.35	6.35	7.94
Thickness (mm)	0.05	0.038	0.05	0.05
Clinical uses	short bicuspid & molars	bicuspid/ molars	bicuspid/ molars	long molars

Thin-Gauge Bands Identified by Notch Here



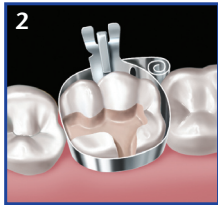
Step by Step

To properly fit tooth, matrix should be slightly larger than occlusal circumference.



Preparation

Unroll coil slightly with finger. Slide the auto-lock against the coil.



Placement

Position it with the auto-lock loop at the center of the buccal or lingual... or the remaining section of standing tooth.



Tightening

Insert Automate III tip into coil and rotate knurled handle clockwise. After 2 to 3 clicks, stop.



Tooth Restoration

Place anatomical wedges as desired. Burnish contact areas as needed. Restore tooth.



Release and Removal

Rotate winding tip of Automate III counterclockwise (1/4 turn). To open the matrix, clip projecting end of Auto-Lock loop.

ORDERING INFORMATION

AutoMatrix® Introductory Package 624.22.501
96 Bands (24 of each size)
1 Automate® III Tightening Device, Snippers

AutoMatrix® Refills (72 pieces each)
NR: Narrow-Regular 624.22.511
MT: Medium-Thin 624.22.510
MR: Medium-Regular 624.22.512
WR: Wide-Regular 624.22.513

AutoMatrix® Accessories
Snippers 624.22.601
Automate® III Tightening Device 624.22.602
Extra Shaft Assembly 624.22.603
Repair Set for Snippers 963010



DENTSPLY DeTrey GmbH
De-Trey-Str. 1
78467 Konstanz
Germany
www.dentsply.de

For better dentistry

DENTSPLY

Palodent®

The original contoured sectional matrix system.

Nothing is as quick and easy for perfect contacts.



BiTine® Placement Forceps:

- Firm hold of the BiTine® ring during placement and removal.

Original BiTine® Round Ring:

- Gentle tooth separation for getting proper contours.
- Eliminates forced wedging (cause for gingival trauma).

BiTine® II Oval Ring:

- Longer loop for more visibility
- Longer tines for easy and firm placement in M.O.D. (Pict. 5)

Three sizes and geometries for all situations:

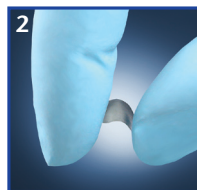
Standard: For most posterior situations

Mini: For narrow and shallow preparations with proximal boxes

Plus: For preparations with deep proximal boxes.



Step by Step



Separation:

The spring action of the BiTine Ring creates a gentle separation for tooth preparation.

BiTine Ring is removed; Finger roll the matrix to the approximate tooth curvature.

Matrix Placement:

Place the matrix and insert an anatomical wedge (to close the gingival margin).

BiTine Ring is placed with the tines in the proximal plane for stabilization of the matrix.

Tips for M.O.D.

The BiTine II Oval Ring is placed over the BiTine Round Ring or

Two BiTine Rings are placed diverging like wings.

ORDERING INFORMATION

Palodent® Complete Kit 659060Y
200 Mixed Matrices, 6 rings

Palodent® Refills

100 Standard Matrices Refill	659010
50 Standard Matrices Refill	659015
50 Mini Matrices Refill	659020
50 Plus Matrices Refill	659030
4 BiTine® Round Ring Refill	659040
2 BiTine® II Oval Ring Refill	659050

Palodent® Forcep 624.99.060

DENTSPLY DeTrey GmbH
De-Trey-Str. 1
78467 Konstanz
Germany
www.dentsply.de

For better dentistry

DENTSPLY